

COUNTY of SAN BENITO
State of California

AUXILIARY COMMUNICATIONS SERVICE PLAN

Radio Amateur Civil Emergency
Service (RACES)

An Emergency Communications
Reserve Unit



May 2011

**OFFICE OF THE BOARD OF SUPERVISORS
COUNTY OF SAN BENITO, STATE OF CALIFORNIA**

The Board of Supervisors of County of San Benito met at the Administration Building, Hollister, California, at its usual place of meeting on May 24, 2011 in regular session.

Upon motion duly made by Supervisor Barrios and seconded by Supervisor Botelho, adopted Resolution No. 2011-41 authorizing the creation of the "San Benito County Auxiliary Communications Service and Radio Amateur Civil Emergency Service Unit" and approved the Auxiliary Communications Service Plan and authorized the County Administrative Officer to sign.

I hereby certify that the foregoing is a full, true and correct copy of an order made or resolution adopted and entered on the 24th day of May, 2011 in File 2011 of Supervisor's minutes, thereof.

WITNESS my hand and seal of said Board of Supervisors affixed this 30th day of June, 2011.

DENISE R. THOME, Clerk of the Board of Supervisors
in and for the County of San Benito, State of California

Denise R. Thome

**COUNTY OF SAN BENITO
AUXILIARY COMMUNICATIONS SERVICE & RACES PLAN**

Mission Statement

Under the direction of the San Benito County Office of Emergency Services, the mission of the San Benito County Auxiliary Communications Service and Radio Amateur Civil Emergency Service Unit is to install, operate, and maintain reliable, continuous supplemental and emergency backup communications, as per 47 CFR 97.407, in support of the San Benito County Operational Area's needs.

INTRODUCTION

The Auxiliary Communications Service (ACS) is an emergency communications unit that provides San Benito County Local Governments with an emergency communications reserve unit. The ACS possesses a variety of volunteer skills for emergency tactical, administrative and logistical communications between its agencies, cities within the Operational Area, neighboring governments, and the California Emergency Management Agency (Cal EMA).

The ACS mission is the emergency support of civil defense and disaster response and recovery using telecommunications resources and personnel and to enhance the Emergency Support Function 2 (ESF2) communications capabilities of San Benito County Governments through the County Office of Emergency Services.

The ACS coordinates Amateur Radio resources and equivalent government resources. ACS promotes the effective management and utilization of the Amateur Radio operators and other Federal Communications Commission (FCC) licensees in support of civil defense and disaster response and recovery. While other FCC licensees may become a part of the ACS, this Plan is specifically directed to the use of Amateur Radio operators under the provisions of the Radio Amateur Civil Emergency Service (RACES) as provided for in Part 97.407 of the FCC regulations which states in part:

"97.407 Radio Amateur Civil Emergency Service. - (a) No station may transmit in RACES unless it is an FCC-licensed primary, club, or military recreation station and it is certified by a civil defense organization as registered with that organization, or it is an FCC-licensed RACES station. No person may be the control operator of a RACES station, or may be the control operator of an amateur station transmitting in RACES unless that person holds a FCC-issued amateur operator license and is certified by a civil defense organization as enrolled in that organization."

The ACS program is administered under the guidance and direction of the San Benito County Emergency Services Manager.

**COUNTY OF SAN BENITO
AUXILIARY COMMUNICATIONS SERVICE & RACES PLAN**

The resources of the ACS are an essential staff resource intended to augment agency and public safety communications. The number of participants is not limited and will be based on the specific need and the availability of responders. A declaration of an emergency is not required to mobilize the RACES resources. However, the use of the FCC Amateur Radio service frequencies is limited to training and emergency communications.

The ACS promotes the effective management and utilization of those persons skilled in communications modalities. This includes computers, computer networks, microwave, radio, satellite, video-conference, Amateur Radio – as the RACES – or otherwise, Civil Air Patrol communicators, Radio Emergency Associated Communication Team (REACT), Military Auxiliary Radio Service (MARS), and similar participants. The ACS may operate on the FCC Amateur Radio Service frequencies as the RACES, when appropriate, with duly licensed operators.

The ACS shall coordinate ACS or RACES mutual aid under the direction of the jurisdiction's emergency services agency.

Program participants are encouraged to take part in the California Emergency Services Nets, periodic exercises and other events offered by Cal EMA, as they are a major means of operations skill enhancement for personnel and equipment readiness.

**COUNTY OF SAN BENITO
AUXILIARY COMMUNICATIONS SERVICE & RACES PLAN**

TABLE OF CONTENTS

<u>Subject:</u>	<u>Page #</u>
Mission Statement/Introduction	1
Table of Contents	3
Distribution	4
Purpose	5
 <u>Section - Subject</u>	
1. Area Covered	5
2. Threats	5
3. Jurisdictions Covered	6
4. ACS Officer and Staff Organization	7
5. Participants	8
6. Resources	8
7. Networks	8
8. Network Service Levels	9
9. Identifiers	9
10. Frequencies & Frequency Coordination	9
11. Station Locations	10
12. Equipment Resources	10
13. Mutual Aid	10
14. Review	10
15. Mobilization	10
 Approvals and Concurrences	 11
 <u>Appendices</u>	
Operational Area Location on State Map	Appendix 1
Operational Area-County Map	Appendix 2
Operational Area – Cal EMA Region graphic	Appendix 3
Emergency Services Organization	Appendix 4
Civil Defense/Emergency Services Coordinators	Appendix 5
Communications Unit Organization Chart	Appendix 6
Communications Unit Positions	Appendix 7
Networks and Frequency Assignments	Appendix 8
EOC Identification and Tactical Calls	Appendix 9
ICS and MACS Systems of Management	Appendix 10
Station Locations	Appendix 11

**COUNTY OF SAN BENITO
AUXILIARY COMMUNICATIONS SERVICE & RACES PLAN**

DISTRIBUTION

- 1 Cal EMA Headquarters, Sacramento
- 1 Cal EMA Mutual Aid Coastal Region II Office
- 1 CALFIRE Local Ranger Unit
- 1 County Emergency Operations Center
- 1 County Sheriff
- 1 County Office of Emergency Services
- 1 County Communications Manager
- 1 County Fire Coordinator
- 1 County Transportation Department
- 1 County Emergency Medical Services Agency
- 1 County ACS or RACES Radio Officer
- 1 Mobile Command Vehicle
- 1 Each Contiguous County ACS Officer or RACES Radio Officer
- 1 San Benito County Amateur Radio Emergency Service (ARES)

**COUNTY OF SAN BENITO
AUXILIARY COMMUNICATIONS SERVICE & RACES PLAN**

PURPOSE

The purpose of this Plan is to provide authority for the participation of Amateur Radio Operators in providing essential communications during periods of national, state or local emergency. RACES operations are carried out in accordance with FCC Rules and Regulations. The Amateur Radio Operators within the San Benito Operational Area are considered to be a single regional resource and may be assigned to any appropriate jurisdiction within the area.

1.0 AREA COVERED:

The location of COUNTY of SAN BENITO Operational Area is shown on the State of California map in APPENDIX 1. As of 2010, it has a population of 55,269 and a total area of 1,389 square miles.

1.1 THREATS

This area faces a variety of threats, both natural and man-made, for which it must be prepared to respond. A complex geographic area, ocean shoreline, alluvial plains, canyons and hills provide topographic extremes. Demographic factors as well as climate and geological faults present a range of hazards to be considered by emergency services workers - both professional and volunteer. Any of these threats could occasion the activation of qualified emergency communication needs to assist, supplement, augment or replace existing government facilities. Such threats include:

- Chemical and hazardous material spills and chemical releases that affect the population with both immediate and long-term health hazards.
- Dam failure from natural or man-made causes that can result in extensive damage and potential loss of life in areas that would be affected by the sudden surges of water and debris.
- Large scale transportation accidents that can occur from a variety of causes, including automobiles, buses, military and civil aircraft, trains and other means.
- Earthquakes are notorious natural hazards due to the geologic construction of the state. Earthquakes can cause extensive damage and interruption in public and private facilities, death and destruction.
- A major disaster in other operational areas (such as earthquake or tsunami's from offshore seismic activity in the Pacific basin) can cause property damage and loss of life extending far beyond the directly-affected area. Such activity can induce major or sudden population shifts that could provide this operational area with an emergency situation.

**COUNTY OF SAN BENITO
AUXILIARY COMMUNICATIONS SERVICE & RACES PLAN**

- Severe storms, tornadoes, flash floods and landslides can lead to unusual disasters; as can slower rising but devastating floods along major river basins and valleys. Heavy storms increase danger of levee failures. Icing and snows may be an additional hazard under certain conditions.
- Fires are threats to wooded areas and adjacent communities. Hot dry winds and low humidity conditions are a re-occurring condition that can push wildland blazes into urban areas. The resulting loss of ground cover of steeply sloped areas can lead to devastating landslides as well as the loss of natural habitat, citizen housing, injury and death to the populace.
- Certain mountains in the state are classed as active volcanoes by geologists. Prudent preparation dictates consideration of this type of emergency. Depending on timing, magnitude, wind and climatic conditions at the time of an eruption - however seemingly remote that volcano may seem to be - it could present emergency challenges to operational areas and communities that could otherwise be expected to avoid the consequences.
- Nuclear accidents can occur, within or without the state, from fixed nuclear power plant sites, military installations, transportation systems or military aircraft crashes or terrorist activity.
- Unusual incidents can arise out of terrorism, urban unrest or mass actions.
- Nuclear or conventional war, armed aggression are threats. Military bases and key economic and industrial centers in California could be targets for attacks that can spill over into other areas.

2.0 JURISDICTIONS COVERED:

The jurisdiction covered by this plan is the County of SAN BENITO, herein after referred to as the SAN BENITO Operational Area. See Appendix 2 for Map.

The term "Operational Area" is used in this plan rather than "county". The California Emergency Services Act defines an Operational Area (OA) as "an intermediate level of the state emergency services organization, consisting of a county and all political subdivisions within the county area." (Cal. Government Code Section § 8559). Further, "an Operational Area may be used by the county and the political subdivisions comprising the operational area for the coordination of emergency activities and to serve as a link in the communications system during a state of emergency or a local emergency." (Cal. Government Code Section § 8605). Operational areas, unlike counties and cities, are not jurisdictions. Each operational area is a special purpose organization, created to prepare for and coordinate the response to emergencies within a county area. Operational areas coordinate inter jurisdictional emergency operations and mutual aid. See Appendix 2a.

**COUNTY OF SAN BENITO
AUXILIARY COMMUNICATIONS SERVICE & RACES PLAN**

2.1 Operational Areas and participating cities develop plans consistent with the State ACS Plan and the Policies and Guidelines for the ACS.

2.2 The position responsible for the development of emergency services, civil defense, and disaster activities is the San Benito County Director of Emergency Services. The development of this plan is the responsibility of the Emergency Services Manager. See Appendix 4.

2.3 Jurisdictions within the Operational Area are shown herein, along with the title of the position responsible for the development of emergency services, civil defense, and disaster activities; and office address. The day-to-day emergency services/civil defense coordinators for the jurisdictions are listed in Appendix 5.

2.3.1	County of San Benito	Director of Emergency Services
2.3.2	County of San Benito	Sheriff/Coroner
2.3.3	County of San Benito	Fire Chief
2.3.4	County of San Benito	Emergency Services Manager
2.3.5	City of Hollister	City Manager
2.3.6	City of Hollister	Police Chief
2.3.7	City of Hollister	Fire Chief
2.3.8	City of San Juan Bautista	City Manager
2.3.9	All other political subdivisions located within San Benito County	

2.4 RACES:

Radio Amateur Civil Emergency Services (RACES) is an integral part of the provision of emergency services. RACES operations are to be in accordance with FCC Rules and Regulations. This plan will serve to qualify this Operational Area for matching funds under the Federal Contributions or other such Program for a period of three years following the date of approval by the California Emergency Management Agency.

3.0 ACS OFFICER AND STAFF ORGANIZATION:

The organization for the implementation and administration of these resources is shown in Appendix 6 and is based on the key role of the ACS Officer. Written operational procedures are issued as required and maintained in a separate Standard Operating Procedures manual.

**COUNTY OF SAN BENITO
AUXILIARY COMMUNICATIONS SERVICE & RACES PLAN**

4.0 PARTICIPANTS:

4.1 Level I Participants:

These are those participants who partake of the program in an on-going process. Amateur Radio operators and others enrolled under the provisions of this plan shall be registered as Disaster Service Workers in the COMMUNICATIONS class in accordance with Section §3100 of the California Government Code.

Due to the potentially sensitive nature of the activities of this level of participant, enrollment shall include a Loyalty Oath/Affirmation, and authorization for verification of loyalty and reliability through appropriate local records checks as determined by the Sheriff. These participants are expected to report to their assignments as quickly as possible when assigned. Upon record check clearance and approval for participation by the Radio Officer, they shall be issued identification cards by the Emergency Services Manager or other designated person.

4.2 Level II Participants:

These include all others, such as those brought in for service only in an extended emergency. Level II participants shall be registered as Disaster Service Workers in the COMMUNICATIONS class in accordance with Section §3100 of the California Government Code and complete the Loyalty Oath/Affirmation. Such participants will not be checked for loyalty and reliability through local record checks. They will NOT be issued an identification card, but listed on a separate Level II roster maintained by the Radio Officer.

5.0 RESOURCES:

These resources are available to all San Benito Operational Area government services/agencies as required, but are not assigned exclusively to any one service. Specific needs for emergency communications using communications volunteers in government service by departments or agencies of this jurisdiction are a part of the this service; and are coordinated by agency position specified in section 14.

6.0 NETWORKS:

This service operates four network levels within the Operational Area under this plan. Individual networks (described in the next section) are shown in Appendix 8 along with the frequencies that apply to the networks.

COUNTY OF SAN BENITO
AUXILIARY COMMUNICATIONS SERVICE & RACES PLAN

7.0 NETWORK SERVICE LEVELS:

7.1 Level 1 nets provide direction & control communications between the California Emergency Management Agency Region facility and the Operational Area Emergency Operations Center.

7.2 Level 2 nets provide direction & control communications between the Operational Area Emergency Operations Center and the jurisdictions within the Operational Area; and between the Operational Area EOC and the Emergency Alert System stations in the Operational Area.

7.3 Level 3 nets provide communications between the Operational Area EOC and deployed mobile units and other authorized units within the Operational Area.

7.4 Level 4 nets provide communications between jurisdictional (i.e., City) Emergency Operations Centers and deployed mobiles and other authorized units within the City.

8.0 IDENTIFIERS:

Operators are to use tactical station identifiers in conjunction with their Amateur call sign. Tactical call signs are published in Appendix 9.

9.0 FREQUENCIES AND FREQUENCY COORDINATION:

9.1 Frequencies used within the Operational Area are coordinated by the Radio Officer who resolves interference problems within this Area in coordination with the Cal EMA Region Communications Coordinator.

9.2 For day-to-day activities only government frequencies and call signs are used in this service. Amateur Radio Service *frequencies* may be used for any emergency or for training and familiarization in preparation for emergency operations. Use of Amateur Radio *frequencies* for government business other than in emergencies and training is a contradiction of the FCC regulations for Amateur Radio licensees.

9.3 In mutual cooperation with other Amateurs this service may use any *frequency* in any Amateur Radio band, for which appropriate licensed operators are available, provided that Amateur band *frequencies* are used ONLY for emergency communications and/or exercises, drills and other events related thereto for purpose of familiarization, training and testing.

9.4 In the event of an emergency, which necessitates invoking the President's war emergency powers, RACES operations will be governed by paragraph 97.407(b) of the FCC Rules and Regulations, 47 CFR. Operations will be restricted to frequencies assigned and coordinated by the Governor's Office of Emergency Services.

**COUNTY OF SAN BENITO
AUXILIARY COMMUNICATIONS SERVICE & RACES PLAN**

10. STATION LOCATIONS:

Locations of all Net Control Stations and other fixed stations operated under this plan, and their tactical identifiers, are listed in a separate standard operations plan.

11. EQUIPMENT RESOURCES:

There are fixed, portable, and mobile stations operating under the provisions of this plan. The majority of equipment is owned and operated by individual participants; some is provided by the government. All networks will be available at the primary Emergency Operations Center and at designated alternate centers.

12. MUTUAL AID:

This service is a COMMUNICATION resource covered by the California Master Mutual Aid Agreement. Requests from or to the Operational Area for assistance (mutual aid) are to be directed to Cal EMA Region. In the event communication is broken to Region, said request may be directed to an adjoining county with notification to the Cal EMA as soon as conditions permit.

13. REVIEW:

This plan, and its appendices, shall be reviewed for completeness, currency, and accuracy not later than three (3) years after the latest approval date. Revisions and corrections will be issued to all plan holders when approved.

14. MOBILIZATION:

This service is an essential staff resource intended to augment agency and Public Safety communications. Program participants, from one to such number as appropriate, may be used in support of agency and Public Safety Communications requirements at any time. No declaration of an emergency is required. The use of FCC Amateur Radio Service *frequencies* is limited to training and emergency communications.

14.1 AUTHORITY. The authority to use this service and any of its personnel rests with:

14.1.1 The Emergency Services Manager

14.1.2 Communications Manager

14.2 Requests for communications support from any agency shall be directed to the Emergency Services Manager or ACS/RACES Radio Officer. See paragraph 14.1.

14.3 ALERT LIST. Staff shall maintain a current alert list roster and callout procedures in a separate document.

COUNTY OF SAN BENITO
AUXILIARY COMMUNICATIONS SERVICE PLAN

APPROVALS AND CONCURRENCES

MAY 12, 2011

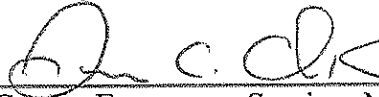
Date



County (ACS or RACES Radio) Officer

MAY 3, 2011

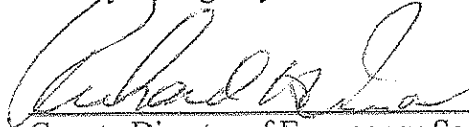
Date



County Emergency Services Manager

6/30/11

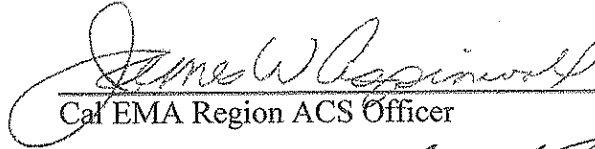
Date



County Director of Emergency Services

8 Mar 2011

Date



Cal EMA Region ACS Officer

2/2/11

Date



Cal EMA Region Communications Coordinator

2/2/2011

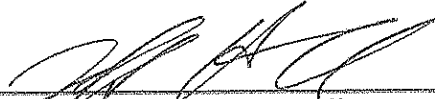
Date



Cal EMA Chief ACS (RACES Radio) Officer

2/2/11

Date



Cal EMA ACS Program Coordinator

*[** County signatories may be as little as the senior volunteer & the program coordinator or as many as the County determines up to and including the Chief Administrative Officer or Chairman of the Board of Supervisors or other Appointed Official. The State signatories shown are the minimum required for a County Operational Plan.]*

**COUNTY OF SAN BENITO
AUXILIARY COMMUNICATIONS SERVICE & RACES PLAN**

Operational Area Location on State Map
APPENDIX 1



**COUNTY OF SAN BENITO
AUXILIARY COMMUNICATIONS SERVICE & RACES PLAN**

Operational Area – County Map
APPENDIX 2



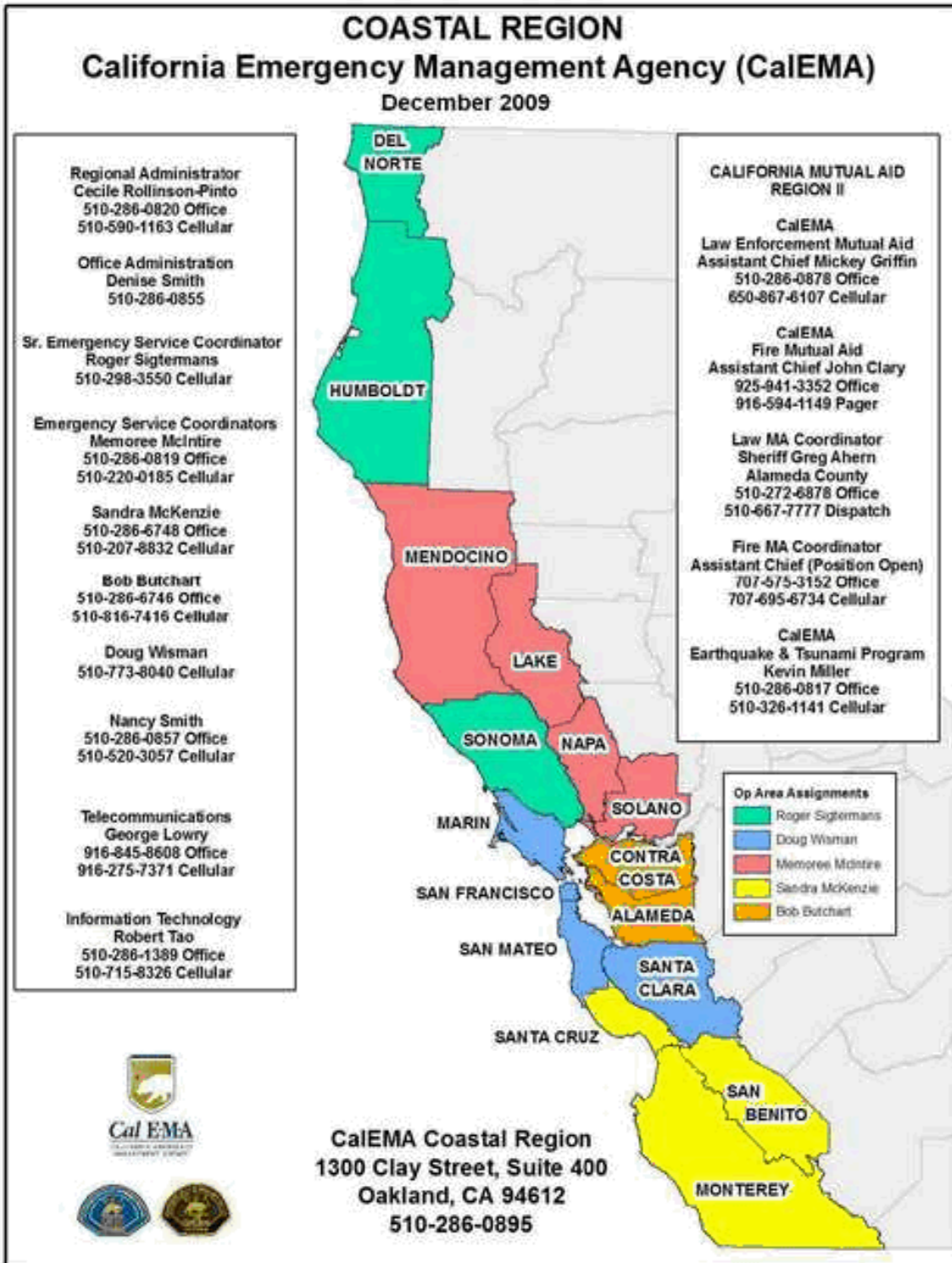
**COUNTY OF SAN BENITO
AUXILIARY COMMUNICATIONS SERVICE & RACES PLAN**

Mutual Aid Regions of California
APPENDIX 2a



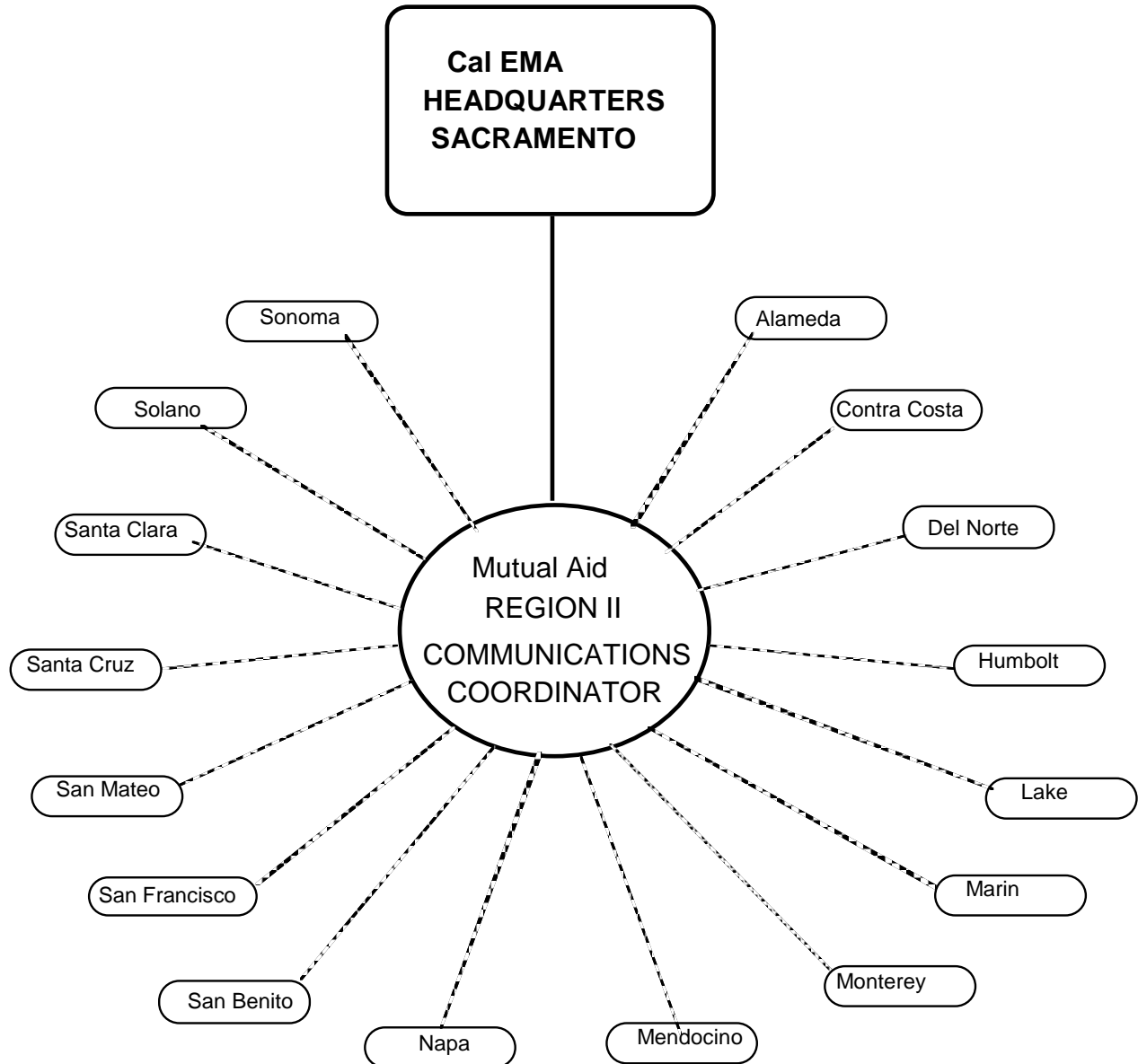
**COUNTY OF SAN BENITO
AUXILIARY COMMUNICATIONS SERVICE & RACES PLAN**

Mutual Aid - Coastal Region Detail
APPENDIX 2b



**COUNTY OF SAN BENITO
AUXILIARY COMMUNICATIONS SERVICE & RACES PLAN**

**OPERATIONAL AREA – Cal EMA REGION GRAPHIC
APPENDIX 3**

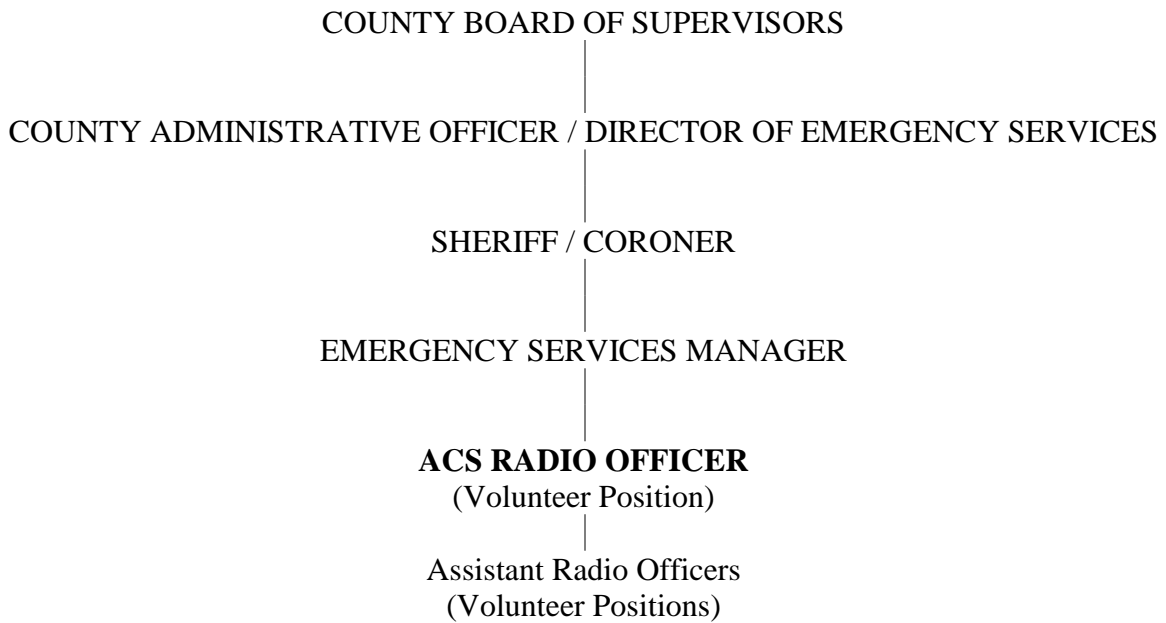


Emergency Communication needs beyond the capacity of an Operational Area (Cour are based on the principles of mutual aid, utilizing the Region as the coordinating link

**COUNTY OF SAN BENITO
AUXILIARY COMMUNICATIONS SERVICE & RACES PLAN**

County Emergency Services Organization
APPENDIX 4

Emergency Services Organization Chart



**COUNTY OF SAN BENITO
AUXILIARY COMMUNICATIONS SERVICE & RACES PLAN**

Civil Defense/Emergency Services Coordinators
APPENDIX 5

EMERGENCY SERVICE COORDINATORS

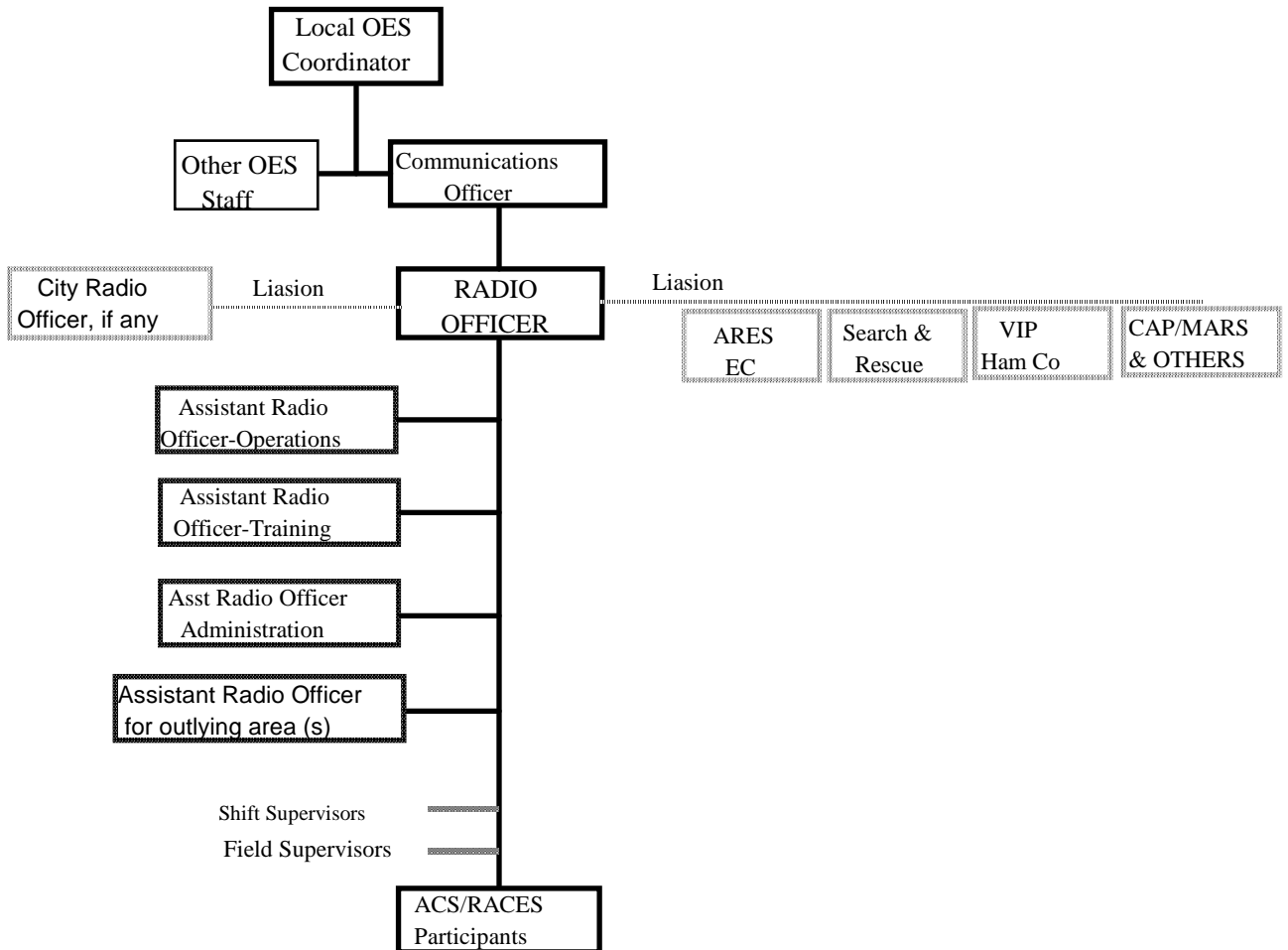
County of San Benito

James C. Clark – Emergency Services Manager
San Benito County Sheriff's Office
Office of Emergency Services
471 Fourth Street
Hollister, CA 95023
(831) 636-4168 – Office
(831) 636-4165 – Fax
Call Sign: KJ6MFX
jclark@sbcsheriff.org

**COUNTY OF SAN BENITO
AUXILIARY COMMUNICATIONS SERVICE & RACES PLAN**

Communications Unit Organization Chart
APPENDIX 6

COMMUNICATIONS UNIT ORGANIZATION CHART
with relationship to local Government



**COUNTY OF SAN BENITO
AUXILIARY COMMUNICATIONS SERVICE & RACES PLAN**

Communications Unit Position Assignments
APPENDIX 7

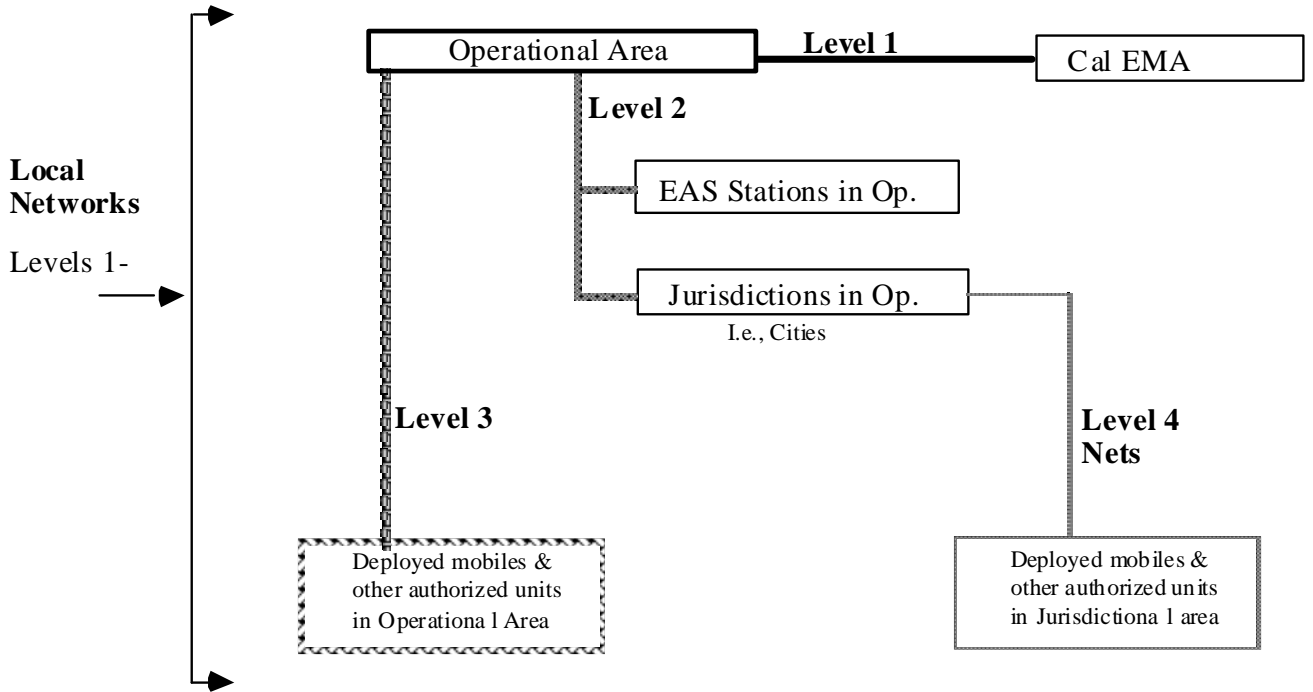
COMMUNICATIONS UNIT POSITIONS

Title	Name	Callsign
County ACS or Radio Officer:	Tim Takeuchi 1760F Airline Hwy, #135 Hollister, CA 95023 831-636-7383	W6TST
Assistant Radio Officer - Training:	Heatherly Takeuchi 1760F Airline Hwy, #135 Hollister, CA 95023 831-636-7383	N6HKT

**COUNTY OF SAN BENITO
AUXILIARY COMMUNICATIONS SERVICE & RACES PLAN**

Network and Frequency Assignments
APPENDIX 8

NETWORK FREQUENCY ASSIGNMENTS



NET 1: O/A or COUNTY TO REGION	(1)	
NET 2: O/A or COUNTY to CITIES, other COUNTIES, Incident Command Centers EBS Radio Stations.	A.	147.315 MHz
	B.	147.315 MHz
	C.	147.315 MHz
	D.	147.315 MHz
NET 3: COUNTY TO ITS UNITS:	A.	147.315 MHz
	B.	147.315 MHz
NET 4: CITIES TO CITY UNITS:	A.	147.315 MHz
	B.	147.315 MHz

[1] FCC Amateur Radio Service HF frequencies are not generally used for level 1. Participants should be trained on the non-Amateur frequencies.

Statewide HF voice SSB FCC Amateur Radio Service calling and coordination frequencies are: Daytime: 7230.0 KHZ, LSB. Night: 3992.0, 3960.0 KHz LSB and/or 1987.0 KHZ LSB. If conditions are complex, listen 10 KHZ up or down as it may have been necessary to relocate to a different channel.

**COUNTY OF SAN BENITO
AUXILIARY COMMUNICATIONS SERVICE & RACES PLAN**

Emergency Operation Centers (EOC) Identification and Tactical Call Signs
APPENDIX 9

EMERGENCY OPERATIONS CENTERS AND TACTICAL CALL SIGNS

County of San Benito OA Primary) ("COUNTY of SAN BENITO EOC")	"San Benito EOC" <i>Tactical Call</i> 395 Apollo Way, Hollister, CA 95023
--	---

Tactical call signs shall be utilized at all times. In addition, FCC regulations require the Radio Amateur to identify by call sign in three specific instances:

- (1) At the END of a contact (a series of transmissions) and/or
 - (2) At 10 minute intervals.
 - (3) At the END of an unanswered call.
- See illustrations *

The EOC identity remains constant, the operator or station Radio Amateur call ID alters with a change in operators. This ICS procedure provides operations clarity and continuity in times of stress and disorientation typical of emergency operations.

Illustrations:

The call sign of the appropriate licensee is added to the tactical call in the following manner in the required situations to comply with FCC Radio Amateur regulations:

A contact is a series of transmissions, from one each way to many. A short contact is illustrated. The contact is initiated in this manner:

XYZ EOC:	"Region ##, this is XYZ EOC, Over"
Region EOC:	"XYZ EOC, Region ##, Over"
	[Reply with message, traffic, etc., then end contact as follows:]
XYZ EOC:	XYZ EOC, "WX6XXX Out" (END of contact.)
Region EOC	Region EOC, "WA6AAA, Out" (END of contact)
	[The initiating station is the one that terminates the contact.]

10 minute identification
"XYZ EOC, WX6XXX"

No response to a call to another station
XYZ EOC, "WX6XXX, No Contact"

WX6XXX and WA6AAA = Radio Amateur call signs

**[Do not shorten tactical call if city and county have same name, or if confusion with another area would result.]

**COUNTY OF SAN BENITO
AUXILIARY COMMUNICATIONS SERVICE & RACES PLAN**

ICS and MACS Systems of Management
APPENDIX 10-1

Systems of Management

The Auxiliary Communications Service encounters and works with structured response systems in emergency situations, such as the SEMS, Standardized Emergency Management System and its components:

- the ICS (Incident Command System) and;
- its extension, the MACS (Multi Agency Command System)
-

Program participants are expected to learn the terminology of such systems including the Response Information Management System (RIMS) used by the California Emergency Management Agency, Operational Areas, Counties and various agencies.

INCIDENT COMMAND SYSTEM

The Incident Command System (ICS) is an emergency management organizational structure designed to provide common and more effective procedures to diverse agencies who must work together under crisis situations. The ICS has a number of components. These components work together interactively to provide the basis for the ICS concept. These components are common terminology, modular organization, integrated communications, unified command structure, consolidated action plans, manageable span-of-control, predesigned incident facilities and comprehensive resource management.

Multi-Agency Coordination System

The Multi-Agency Coordination System, an extension of the ICS system, streamlines procedures for coordinating mutual aid and allocating resources during emergencies when more than one agency or jurisdiction is involved in the response. It has been adopted in some jurisdictions and is under review by other probable users.

The communications unit as part of the Logistic Section is detailed in the attached chart for a multi-branch organization ICS response.

**COUNTY OF SAN BENITO
AUXILIARY COMMUNICATIONS SERVICE & RACES PLAN**

**ICS CHART
ADDENDUM 10-2**

ICS SYSTEM

INCIDENT RADIO COMMUNICATIONS PLAN		Incident Name San Benito County Standard ARES Plan	Date/Time Prepared 6/9/2010		Operational Period Date/Time Effective June 2010							
New #	Old #	Function	Channel Name/Trunked Radio System Talkgroup	Assignment	RX Freq	Nor/W	Location	TX Freq	Nor/W	Tx Tone/NAC	Mode A, D or M	Remarks
1	1	Hollister Area	H VHF-N6SBC/R	Hollister/SJB	147.315	W	Downtown Hollister	147.915	W	PL-94.8	A	Net Control
2	-	Hollister BackUp	H ALT-N6SBC/R	Hollister/SJB BackUp	147.315	W	TBA	147.915	W	PL-110.9?	A	BackUp
3	2	So. San Benito Co	SC VHF-N6SBC/R	Facilities, Panoche, Bitterwater	146.025	W	Bear Valley	146.025	W	PL-94.8	A	South San Benito county
4	3	Hollister UHF	H UHF-W6MOW	Hollister UHF BackUp	441.900	W	San Juan Canyon Rd	446.900	W	PL-110.9	A	Last Status: Not Operational
8	4	Monterey/San Benito	FP VHF-K6JE	BackUp and San Benito->Monterey	145.470	W	Fremont Peak	144.870	W	PL-94.8	A	Fremont Peak San Benito Co->Monterey Co
9	5	Monterey/San Benito	FP UHF-K6JE	BackUp and San Benito->Monterey	441.450	W	Fremont Peak	446.450	W	PL-123	A	Fremont Peak San Benito Co->Monterey Co
11	-	Santa Cruz	W6WLS	Santa Cruz	147.180	W	Empire Grade	147.780	W	PL-94.8	A	Coord w Santa Cruz ARES
12	-	Santa Clara	W6TI	Santa Clara	147.360	W	Los Altos	147.960	W	PL-110.9	A	Coord w Santa Clara ARES
19	6	SW San Benito Co.	N6SPD	South OPS	145.370	W	Williams Hill	144.770	W	PL-100.0	A	Last Status: Not Operational
21	11	VHF Tactical 1	none	point-to-point	147.495	W	N/A	147.495	W	PL-94.8	A	Simplex point-to-point
22	12	VHF Tactical 2	none	point-to-point	145.555	W	N/A	145.555	W	none	A	Simplex point-to-point
23	13	UHF Tactical 3	none	point-to-point	446.500	W	N/A	446.500	W	PL-94.8	A	Simplex & Cross Band Repeater
24	14	UHF Nat Calling	none	point-to-point	146.520	W	N/A	146.520	W	none	A	National Calling Frequency
25	15	UHF Nat Calling	none	point-to-point	446.000	W	N/A	446.000	W	none	A	National Calling Frequency
26	21	XB to H VHF	XB 1	CrossBand Repeat	446.500	W	N/A	446.500	W	PL-94.8	A	CrossBand to N6SBC Hollister
27	22	XB to SC VHF	XB 2	CrossBand Repeat	446.500	W	N/A	446.500	W	PL-94.8	A	CrossBand to N6SBC South Co.
28	23	XB to TAC 1	XB 3	CrossBand Repeat	446.500	W	N/A	446.500	W	PL-94.8	A	CrossBand to TAC 1
31	40	Meters	none		7230.0 KHz LSB		N/A	7230.0 KHz LSB		none	A	HF Daytime
32	80	Meters	none		3992.0 KHz LSB		N/A	3992.0 KHz LSB		none	A	HF Nightime Primary
33	160	Meters	none		1987.0 KHz LSB		N/A	1987.0 KHz LSB		none	A	HF Nightime Secondary
34	FRS Ch 1		none		462.5625	W	N/A	462.5625	W	none	A	FRS Emergency
35	GMRS Ch 20		none	GMRS Emergency	462.675	W	N/A	462.675	W	none	A	GMRS Emergency
36	CB Ch 9		none	REACT	27.065	W	N/A	27.065	W	none	A	CB Emergency
37	CB Ch 17		none		27.165	W	N/A	27.165	W	none	A	Unknown
Prepared By: (Communications Unit)												
Tim Takeuchi/W6TST												
Incident Location County: San Benito & Monterey Operational Areas State CA												

The convention calls for frequency lists to show four digits after the decimal place, followed by either an "N" or a "W", depending on whether the frequency is narrow or wide band. Mode refers to either "A" or "D" indicating analog or digital (e.g. Project 25) or "M" indicating mixed mode. All channels are shown as if programmed in a control station, mobile or portable radio. R

ICS 217A (rev. ICS-205) Excel

NFES 1330

For the most current frequency information, check the www.sbcares.org website under "Frequencies"

**COUNTY OF SAN BENITO
AUXILIARY COMMUNICATIONS SERVICE & RACES PLAN**

Station Locations
APPENDIX 11

STATION LOCATIONS

REPEATER FACILITIES

Call: N6SBC
Freqs: 147.315 MHz (PL 94.8 Hz)
Access: Carrier
Location: Hollister, CA (Back Up Location also in Hollister, CA)
Owner: San Benito Co. OES / San Benito Co. ARES

Call: N6SBC
Freq: 146.625 MHz (PL 94.8)
Access: Carrier
Location: Paicines, CA
Owner: San Benito Co. ARES